

# JORDANELLE BASIN LAND USE PLAN

**Project Location:**

- Jordanelle Basin, Utah

**Project Size:**

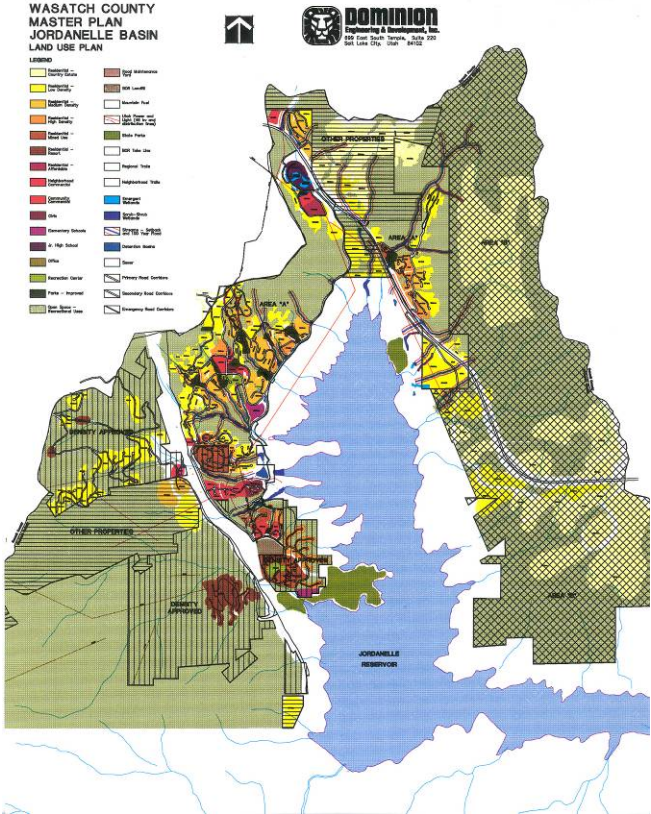
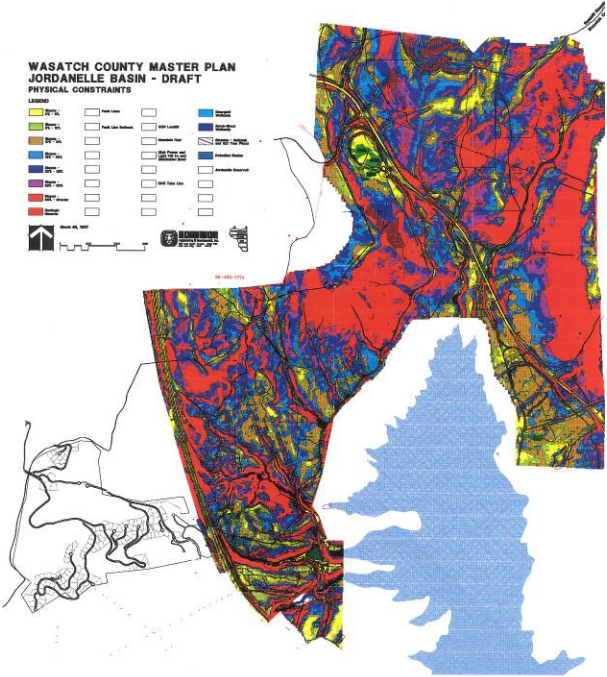
- 9,700 Acres

**Client:**

- Wasatch County, Utah

**Project Design Features:**

- Over 30 major landowners
- 7,320 acres of open space
- 2,185 acres of residential uses
- Resort areas
- Mixed use / resort use
- Community Commercial
- Schools and municipal uses
- Hiking and biking trails
- Parks and common open space



Dominion is responsible for the following:

- Environmental analysis
- Master Planning
- Density calculations
- Alignments of roads & utilities
- Land Use Plan documentation
- Approval processing

Design Team consists of:

- Dominion Engineering
- Wasatch County Planning
- Wasatch County GIS
- Liz Josephson Design
- Dominion worked closely with Wasatch County and land owners on the Land Use Plan for the Jordanelle Basin.